



The most successful Motor bicycle Challenge since more than 10 years!

We are proudly looking back to Austria's most popular Challenge which was celebrating its 10th anniversary in 2016. For 2017 the GSX-R Challenge will be taking place with a new organizer named WSB-SPORT.

The facts for the Austrian SUZUKI GSX-R Challenge:

- beneficial **Challenge Package offers** with additional one time special offers and even more **benefits**
- Press media reports on all Challenge weekends
- Open rules and technical regulations. Free tire allocation and all model ranges of the SUZUKI GSX-R Series are qualified to fight for the trophy.
- More than €7.500,- for Trophy Money !
- Three categories for the Trophy. All qualifying's and races will be started in these categories. Supersport (up to 600ccm), Superbike (750ccm) and GP (above 751ccm).
- Long Lasting Partners like Bridgestone, Motul, Remus and Haslacher Suspension, supporting the Challenge pre saison and on track.
- Following the Spirit of the SUZUKI Family, **sportsmanship and fun.**
- Five Weekends on the most beautiful and most rider's favorite racetracks in Europe.
- Beneficial prices for newcomers on the Motorbike, suspension and exhaust system.

As every year, the battle for the Austrian SUZUKI Trophy already starts with registration! To participate please use the website of WSB-SPORT at [www.wsb-sport.com](http://www.wsb-sport.com) bound to 3x30 participants. Final acceptance for registration is the 28. February 2017.



**BRIDGESTONE**

*Haslacher*

FOTOREJDA

**WSB-SPORT.COM**  
powered by pezi&er racing



**MOTUL**



# 1. Preface:

## 1.1 Motor bicycles qualified:

- ❖ SUZUKI GSX-R600 (all models) Class Supersport (up to 600 ccm)
- ❖ SUZUKI GSX-R750 (all models) Class Superbike (750ccm)
- ❖ SUZUKI GSX-R1000 (all models) Class GP (above 751 ccm)

Max participants per category: 30

The classes will we started separated: Supersport, Superbike, GP.

## 1.2 Calendar 2017:

All events for the Calendar 2017 will be announced on the homepage of the organizer WSB-Sport. Currently following events will be carried out fighting for the SUZUKI GSX-R Challenge crown (conditional content):

❖ Event 1	Pannoniaring (Hungary)	28. - 30. April 2017
❖ Event 2	Rijeka / Grobnik (Croatia)	16. - 18. June 2017
❖ Event 3	Most (Czech Republic)	07. - 09. July 2017
❖ Event 4	Brno (Czech Republic)	28. - 30. July 2017
❖ Event 5	Slovakiaring (Slovakia)	25. - 27. August 2017

Sessions during each event will be structured for free practice, a qualifying session and races for each category on Saturday and Sunday. Race distance will be from 8 Laps on Saturday up to 14 Laps on Sundays race. The SUZUKI GSX-R Challenge in all categories (Supersport, Superbike and GP) is started with free tire allocation.

Overall standings will only be populated with registered SUZUKI GSX-R Challenge participants which participate in at least 3 Events of their choice. All race results will be taken into account for the overall standings.

Temporary participants are welcome and will be ranked in race results but no points will be added for overall standings!

Registration at [www.wsb-sport.com](http://www.wsb-sport.com). SUZUKI GSX-R Challenge boundary is 90 riders all classes (3x30). Final acceptance for registration is the 28. February 2017!



### 1.3 Race distance and Points:

The race distance for the SUZUKI GSX-R Challenge Supersport, Superbike and GP is depending on the race track and ranges from 8 to 14 Laps.

Points: 25, 20, 16, 13, 11, 10, 9, 8, 7, 6, 5, 4, 3, 2 and 1.

For overall standings in the SUZUKI GSX-R Challenge season 2017 following prizes will be distributed amongst the participants at the closing event for each individual class as vouchers for original SUZUKI parts:

For each class:

1. Place voucher for € 800,-
2. Place voucher for € 500,-
3. Place voucher for € 300,-
4. Place voucher for € 250,-
5. Place voucher for € 200,-
6. Place voucher for € 150,-
7. Place voucher for € 100,-
8. Place voucher for € 90,-
9. Place voucher for € 70,-
10. Place voucher for € 50,-

All prizes are not transferable and will not be exchanged with money. Vouchers need to be filled directly with SUZUKI Austria, base alignment with taxes on official selling prices. Vouchers are valid for a period of one year from the date of issue.

### 1.4 Trainings- and race procedure: (Details at [www.wsb-sport.com](http://www.wsb-sport.com))

The starting grid will be based upon the official and concluded qualifying sessions from Friday and Saturday (see time sheet). Ranking will be based upon Lap time. Qualifying session will be listed on the time sheet and or announced during riders conference. Bulletin of the finalized Starting grids will be made available at the Organizers Box.

Riders missing the qualifying sessions will be excluded from the races.

First call race participants	5 Minutes prior race start
Second call race participants	2 Minutes prior race start
Pit lane will be opened for	2 Minutes



**BRIDGESTONE**

*Haslacher*

FOTOREJDA

**WSB-SPORT.COM**  
powered by pezi&er racing



Riders not able to leave the Pit lane after the 2 Minutes, have to wait at the Pit exit until Warmup start has been carried out. Pit lane signal will be signaling with Green Light the moment when these riders are allowed to take their Positions in the Grid for the race start. Grid Row and Grid Position indicating boards will be placed on the right hand side of the tracks except for the Slovakia race track where they will be on the left hand side. The boards will indicate the row at the first starting position per row and each individual starting position directly. Race direction will start the Warmup Lap with the Red Flag. Riders have to return to their starting position after finishing the Warmup Lap. Race direction using the Red Flag will indicate the light signaling System to the riders for the start. After Race direction has left the race track the light signaling system will turn on red light. With a random delay of 1-3 seconds the light signaling system will turn off red light indicating race start. Jumpstart will be penalised with 20 seconds. In case of malfunction of the light signaling system, race direction will abort the race start with the red flag. Riders need to turn off their engines and wait for further instructions. In case of a permanent failure of the light signaling system, race direction will fallback to flag based opening of the race. In this case race distance will also be reduced by 2 Laps automatically.

In case of race called to halt when, race distance passed 50% (based upon the leading rider) full points will be given to the participants based upon the last Lap prior abortion.

In case of race called to halt not passing 50% race distance (based upon the leading rider) the race will be restarted following the original starting grid positions. Possible reduction in race distance will be announced by race direction.

In case of race called to halt not passing 50% and restarting is impossible due to any reason, half points will be given to the participants based upon the last lap prior abortion.

In case of not starting the race at all due to any reason, all drivers in the starting grid will be given 5 points to their overall standing.

#### 1.5 Penalties:

- ❖ 20 seconds jumpstart \*
- ❖ 20 seconds taking over if yellow flag was shown

\*Jumpstart is defined as follows: when returning from the Warmup Lap, any movement in the starting position on the grid after race direction has left the race track. (Video based monitoring from each individual race control center will be utilized.)

#### 1.6 Exclusion:

A rider can be excluded from any race and or session if:

- ❖ not following instructions of the marshals or the race direction
- ❖ unsportsmanlike behavior



**BRIDGESTONE**

*Haslacher*

FOTOREJDA

**WSB-SPORT.COM**  
powered by pezi&racing



- ❖ not following flag signals

## 2. Technical Regulations:

Original cylinder capacity must not be changed.

### 2.1 Tire allocation:

- ❖ The SUZUKI GSX-R Challenge 2017 is started with free tire allocation in all classes.
- ❖ Type and dimension on all tires are without limitation.

### 2.2 Technical inspection:

- ❖ The organizer has the right to execute inspection randomly at any time on the participating motor bicycles.

### 2.3 Motorbike decal:

- ❖ The stickers „GSX-R“ and „SUZUKI“ have to be arranged as seen in the picture below, reflecting manufacturer brand recognition. This applies to all categories.
- ❖ The required stickers are included in the Challenge package and will be distributed latest at the first event. Pre deliver request will be accepted at the email [mverkauf@suzuki.at](mailto:mverkauf@suzuki.at) and will ship according to any agreement accepted by mail.

Template decal:



### 2.4 Preface



Foreign company or competitor logos are not permitted during participating in the SUZUKI GSX-R Challenge. We regret for that potential conflicting social media presence. Please ensure that during training, qualifying or races these logos are either covered or removed. This applies for the complete Motorbike, the rider (Helmet, Leather suite ...).

Race result, pictures of participants are then freely distribute able without additional costs or agreement of others.

## 2.5 Penalties:

- ❖ In case of violation on any rules or regulations, the Organizer and Race control can execute time penalties, reinstatement on the grid or similar up to exclusion for a session, event or more.
- ❖ Organizer and Race control reserve the right to exclude participants in case of violations without any right of refunds.
- ❖ Protest- or legal process is excluded for riders and participants.

## 3. Cup package 2017:

The Cup package for the SUZUKI GSX-R Challenge 2017 offers exclusive advantages to participants for a sensational price. Once more you have the possibility to choose between multiple variations.

The CUP package is mandatory to be able to participate in the SUZUKI GSX-R Challenge 2017. Only official registration at the WSB-SPORT website will be taken in to account. Each rider and corresponding package must be booked separately and is not included in another offering.

### 3.1 SUZUKI GSX-R Challenge 2017 package details:

#### 3.1.1 Package „SUZUKI“ (GSX-R600 / GSX-R750 / GSX-R1000)

the SUZUKI Challenge Package contains following items: (conditional content)



Fleecejacket with Name and starting number



Bathtowel with Name starting number



**BRIDGESTONE**

*Haslacher*

FOTOREJDA

**WSB-SPORT.COM**  
powered by pezibär racing





Poloshirt with Name and Starting number



Sunglasses



T-Shirt



Work gloves



Hood with starting numb



Earplugs



Bag



1x Motul service and merchandising package for a value of over € 100,-

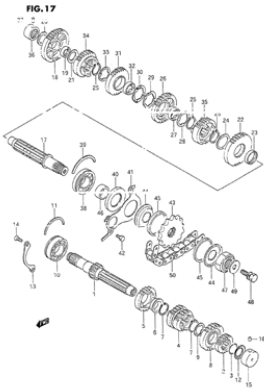


4x GSX-R stickers for the Motorbike cowling € 72,-



# SUZUKI SUZUKI SUZUKI SUZUKI

4x SUZUKI stickers for the Motorbike cowling (choose able black or white) € 126,24



**-30% on spare parts** for the registered motorbike.  
Use able at all official SUZUKI Partners in Austria

The Cup package is soled for €150,- and contains items for a value over more then €500,-! Additional, with earning the Cup package special discounts on original Suzuki parts!

Registration: latest possible date 28. February at [www.wsb-sport.com](http://www.wsb-sport.com)!

Settlement: Cash at the Suzuki Box on the race track at the first scheduled event.

Additional support for other SUZUKI clothing can be received with any SUZUKI Austria Staff member at the race track directly. CUP Package clothing (including Name, starting number and Sponsors) is provided only once for each registered rider.

### 3.1.2 Package „BRIDGESTONE“ (GSX-R600 / GSX-R750 / GSX-R1000)

- BATTLAX Racing V01 dimensions 190/650 R17 2 compounds, 120/600 R17 2 compounds € 330,-
- BATTLAX Racing V02 dimensions 200/655 R17 2 compounds, 120/600 R17 2 compounds € 340,-
- BATTLAX Racing Raintire dimension 180/640 R17 and 120/600 R17 € 340,-
- One shot offer: tenplusone. Valid for 10 tires (plus one tire for free) or 10 Sets (plus one set for free). Offer is only valid once per rider and until 15.3.2017.



**BRIDGESTONE**

*Haslacher*

FOTOREJDA

**WSB-SPORT.COM**  
powered by pezi&er racing







Obtainable directly with Bridgestone Austria GmbH. For ordering please use the email address [harald.kissler@bridgestone.eu](mailto:harald.kissler@bridgestone.eu).

### 3.1.3 Package „REMUS“ (GSX-R600 / GSX-R750 / GSX-R1000)

- REMUS Racing complete system in stainless steel and titan muffler
- For models SUZUKI GSX-R600 / GSX-R750 starting from L1 and GSX-R1000 from L2
- Technical Support for REMUS at the race track (Robert Auer)
- Crash and service package for the muffler
- REMUS Clothing package
- Additional trophy for the best REMUS-Drivers in the overall standings



- Stainless steel system and Titan muffler: € 999,- (original price € 1.565,40)
- Titan-system and Titan muffler: prices on request



### 3.1.4 Annual season card „WSB-Sport“

Annual season card for 2017 for all Events organized by WSB-SPORT for €1.980,-

Included in the annual season card:

- ❖ fees for all Events
- ❖ fees for all races for classified races at any WSB-Sport event

**NOT included:**

- ❖ fees for transponder(s)
- ❖ OSK Race-Card Lizenz
- ❖ Box rental fee

Annual season card latest accepted full price payment fulfillment up to the 28.02.2017. In case of not being able to participate on one particular Event, a replacement rider can be nominated if announced 3 weeks in advance of the Event.

### 3.1.5 Package „HASLACHER“

A fine tuned suspension is the base to be fighting with the top pilots at the SUZUKI GSX-R Challenge. To enable every registered rider in the Challenge our specialist from Haslacher have create a competitive package in price and power.



- Suspension Race 2015 (Fork revision eq Suspension fork offer, suspension strut and steering damper using Hyperpro parts. Original price € 2.250,-  
Offer for Challenge-riders: on request
- Suspension fork 2015 (adjusted: suspension forks, damping, inner tube coating, Racefork oil, SKF sealing rings). Original price € 770,-.  
Offer for Challenge-riders: on request

All prices incl. taxes and only valid for new motorbikes. Older models and used motorbikes might need additional parts eq. Gleitbüchsen. (Estimated extra charge € 100,-). Hyperpro RSC steering damper with surge tank up to 22 clicks modify able and choose able colors. Hyperpro suspension forks (polished and beamed) in progressive or linear available. Hyperpro 463 Raceshock suspension strut modify able in compression Low- and Highspeed, tension, length and initial load modify able hydraulic per handle



(Symbolpictu



**BRIDGESTONE**

**Haslacher**

**FOTOREJDA**

**WSB-SPORT.COM**  
powered by pezibär racing



Obtainable directly through Firma Haslacher Suspension: 06235/7347 or [info@haslacher.at](mailto:info@haslacher.at)

### 3.2 SUZUKI -GSX-R Challenge Motorbikes offers for participants:

With consolidated power and enthusiasm we've been creating a package for riders willing to participate in the SUZUKI GSX-R Challenge for the new current models of each class to provide a warm welcome for new and experienced riders at once.

❖ GSX-R1000RR	ca. € 19.000 ,-	expected shipment end May
❖ GSX-R1000	ca. € 16.000,-	expected shipment end March
❖ GSX-R750	€ 12.490,-	
❖ GSX-R600	€ 9.990,-	

Requirements for these special conditions are fulfilled when receiving a SUZUKI Package. Each rider is bound to participate the complete season 2017 of the GSX-R Challenge. Violations will be feed with € 1.000,- (incl. taxes) and exclusion of the overall standings and further benefits. Prices are including NoVA and taxes. NoVa refunds are possible but need to be requested individually by the riders at your local finance office. Required documents: Invoice or contract of purchase on the Challenge prize, modification validation from your local SUZUKI-dealer.

Motorbikes for these special conditions are available at all official SUZUKI-dealers in Austria. To ensure your motorbike will be ready and available to participate at the very beginning of the challenge, please drop us a copy of the contract of purchase.

Hint: . Participating in the SUZUKI GSX-R Challenge causes temporary warranty suspend for the registered motor bicycle during the period of the complete season.

### 4. Additional special offers:

All registered riders benefit of special conditions agreed with our partners. Benefits can only be received by each Challenge-Card occupant and their registered motorcycle.

4.1 SUZUKI offer receive able through official SUZUKI-brokers. Ensure your broker is ware of these special condition and offering.





#### ❖ SUZUKI Trolley „OGIO 9800 SLED“

Winner of the Motorrad-Magazin! Sturdy and easy to handle with large openings for easy packing. Modifiable stands, soft protected Helm chamber and Multi-Use pockets and a total of 180 Liter space for leather suite, boots, helmet and gadgets. 30 years warranty. Catalogue price: € 206,68 for Challengeriders only € 159,-. as long as stock lasts!

Orders to: [motorradteile@suzuki.at](mailto:motorradteile@suzuki.at)

#### 4.2 IXS Leathersuite

- IXS Kangaroo-Leathersuite customization!
  - Single piece suite of high quality Kangaroo- or Cow leather
  - antiseptic polyamide net lining
  - Shoulder and elbows protected with additional absorbing forms
  - Double leather layers on bottom and knees
  - Stretch applications of Schoeller-Keprotect for the den sleeves, crotch and popliteal space
  - 2 pockets
  - SUZUKI Branding on thighs and back
  - Including customization by IXS

€1.549,- for Kangaroo leather

€1.295,- for Cow leather

Handled through Paddock-Shop Wagner.picture similar



#### 5. Refunds:

Refunds of the CUP Package, special offer for the Motorbike and or the annual season ticket regardless of the reason, impossible. In case of cancellation of an event, liability exclusion is up to the Organizer.



## Organizer for the SUZUKI GSX-R Challenge 2017

WSB-SPORT GmbH

Post	Seegasse 8, A-3250 Wieselburg
Telefon	0043 / 664 / 2212062
Fax	0043 / 2812 / 8372 DW 15
	0043 / 664 / 2212062
Mobil	0043 / 676 / 3133715
	0043 / 676 / 4480680
Internet	<a href="http://www.wsb-sport.com">http://www.wsb-sport.com</a>
e-Mail	<a href="mailto:edgar@wsb-sport.com">edgar@wsb-sport.com</a>

### 6. Overall terms and conditions:

- ❖ Participants taking place at your own risk. Claims for damages to the Organizer, other official staff or other participants, are excluded
- ❖ Instruction of Organizational and Staff personal must be obeyed
- ❖ Participants will be held responsible for damage to people or damage to property if caused on purpose or carelessness.
- ❖ Participants can be excluded if interrupting the event or is acting carless.
- ❖ The Organizer can not be held responsive for quality or condition of the Race track or corresponding facilities.
- ❖ Mandatory required by participants an insurance covering foreign country transactions.
- ❖ Mandatory required by participants suite able protection including: Leather suite with EC-Protectors, Leather Boots, Leather gloves, back protectors and Helmet with static complete coverage. (no collapsible Helmets)
- ❖ Consuming alcohol, drugs or heavy medical treatment is strictly prohibited during the events for participating riders.





SUZUKI GSX-R CHALLENGE 2017 is powered by:

SUZUKI AUSTRIA	<a href="http://www.suzuki.at">www.suzuki.at</a>
BRIDGESTONE AUSTRIA	<a href="http://www.bridgestone-mc.at">www.bridgestone-mc.at</a>
WSB-Sport	<a href="http://www.wsb-sport.at">www.wsb-sport.at</a>
MOTUL AUSTRIA	<a href="http://www.motul.com">www.motul.com</a>
REMUS INNOVATION	<a href="http://www.remus.eu">www.remus.eu</a>
PADDOCK SHOP WAGNER	<a href="http://www.paddock-shop.com">www.paddock-shop.com</a>
IXS	<a href="http://www.ixs.com">www.ixs.com</a>
HASLACHER SUSPENSION	<a href="http://www.haslacher.at">www.haslacher.at</a>
FOTO REJDA	<a href="http://www.fotorejda.com">www.fotorejda.com</a>

Contact:

- o SUZUKI AUSTRIA: Münchner Bundesstraße 160, 5020 Salzburg
- o T: 0662/2155-353 F: 0662/2155-390 E: [mverkauf@suzuki.at](mailto:mverkauf@suzuki.at)

